



UNLIMITED CREATION

APPLICATION INSTRUCTIONS

Atomic Sparkle

The best of both worlds, it sparkles and shimmers like glitter, but it's just as easy to cut and weed as FlexCut.
100% waterbased PU.

FEATURES:



**PU
water-
based**



150µ



**Cotton, polyester,
blended fabrics..**
Less suitable for nylon
and other coated textiles.



60°C

CUTTING CONDITIONS:



**Blade
30 - 45°**



**low/
medium**



30 - 40 cm/s

TRANSFER CONDITIONS:



150°C



12 s



high



Hot peel

Flex on Flex possible



1. Cut mirrored



2. Weed design



3. Transfer design



4. Remove liner, done !

► PACKAGING



50 cm

25 m

50 cm

10 m

50 cm

5 m

Store in a cool and dry place; protect against the influence of light when stored. We recommend not to exceed a storage period of 18 months. The technical specifications rest on extensive tests and technical research. Due to the variety of possible influences during refinement, and use, the specifications should be viewed as reference values. We recommend a suitability test on the original material. A legally binding warranty of specific characteristics cannot be derived from our specifications.

S E F • 110 BD DENIS-PAPIN 53000 LAVAL – FRANCE
TEL. +33 2. 43 53 36 48 FAX +33 2. 43 67 11 78
www.seftextile.com E-mail: contact@sef-france.com
SAS. CAPITAL € 945 000 RCS, LAVAL 304.802.291.00027





UNLIMITED CREATION

AVAILABLE COLORS

Atomic Sparkle



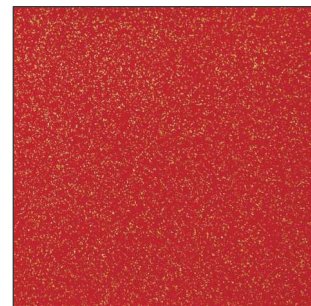
WHITE SPARKLE S10



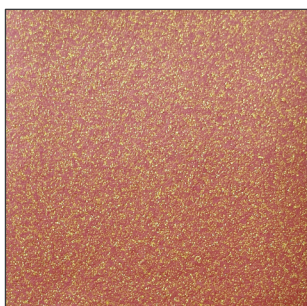
GOLD SPARKLE S08



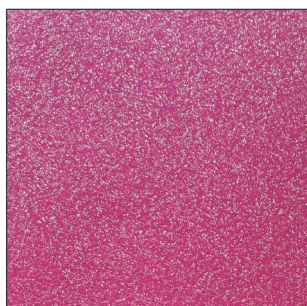
ORANGE SPARKLE S03



RED SPARKLE S02



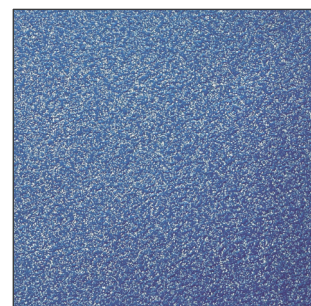
PINK SPARKLE S01



CHERRY SPARKLE S07



PURPLE SPARKLE S06



BLUE SPARKLE S05



GREEN SPARKLE S04



SILVER SPARKLE S09



BLACK SPARKLE S11

Store in a cool and dry place; protect against the influence of light when stored. We recommend not to exceed a storage period of 18 months. The technical specifications rest on extensive tests and technical research. Due to the variety of possible influences during refinement, and use, the specifications should be viewed as reference values. We recommend a suitability test on the original material. A legally binding warranty of specific characteristics cannot be derived from our specifications.

